

Pre-paid funeral  
**set plan price information**



**WILLIAMSON BROTHERS**

Family Funeral Directors  
Since 1927

# The Essential Funeral Plan



From: Williamson Brothers Limited  
Visit: Birch House, Birches Head Road, Birches Head, Stoke-on-Trent, ST1 6LH  
Call: 01782 212880 Email: office@williamsonbrothers.co.uk

## Funeral director's costs

- The services of your funeral director including professional guidance on the legal documents for certification and registration of death and making the funeral arrangements
- Collection of the deceased in the local area up to 15 road miles during office hours
- Care of the deceased
- Viewing the deceased by appointment during office hours
- A standard-sized veneer coffin with flat sides and a flat lid
- Transport of the deceased on the day of the funeral in the local area - standard motor hearse
- 4 pallbearers to convey the coffin on the day of the funeral
- The collection and administration of charitable donations

## Contribution towards third party costs which are outside the control of the funeral director

- A local, attended cremation at a day and time of your choice subject to availability
- Officiant's fees

## What additional costs could there be for me?

- Any services not listed above will need to be paid for at the time they are added or at claim.
- If the covered individual moves and a different funeral director carries out the plan, there may be more to pay.
- There may be more to pay if you later choose a different funeral director.
- Where you have made a contribution towards certain costs, there may be more to pay. These costs are outside of our control. Your funeral director will advise your personal representative of this at the time of the claim.

## Single payment cost of plan

Funeral director's charges	£2,180.00
Third party costs	£1,350.00
Administration fee	£325.00
<b>Total plan price</b>	<b>£3,855.00</b>

For a bespoke plan or to add additional services to the above, for a joint plan or to pay by instalments, please contact us on the number above.

The plan information and prices provided should be used as an example only. There is further important information you will need before deciding to purchase a funeral plan. Terms and conditions apply. Prices correct as at April 2025 and may change in the future. Price based on today's cost of a funeral plus a £325 administration fee charged by Ecclesiastical and any instalment charges.

Ecclesiastical Planning Services Limited (EPSL) Reg. No. 2644860. Registered in England at Benefact House, 2000 Pioneer Avenue, Gloucester Business Park, Brockworth, Gloucester, GL3 4AW, United Kingdom. EPSL is authorised and regulated by the Financial Conduct Authority. Firm Reference Number 958152.

# The Classic Funeral Plan



From: Williamson Brothers Limited  
Visit: Birch House, Birches Head Road, Birches Head, Stoke-on-Trent, ST1 6LH  
Call: 01782 212880 Email: office@williamsonbrothers.co.uk

## Funeral director's costs

- The services of your funeral director including professional guidance on the legal documents for certification and registration of death and making the funeral arrangements
- Collection of the deceased in the local area up to 15 road miles during office hours
- Care of the deceased
- Viewing the deceased by appointment during office hours
- A standard-sized veneer coffin with flat sides and a flat lid
- Transport of the deceased on the day of the funeral in the local area - standard motor hearse
- 1 limousine on the day of the funeral in the local area
- 4 pallbearers to convey the coffin on the day of the funeral
- The collection and administration of charitable donations

## Contribution towards third party costs which are outside the control of the funeral director

- A local, attended cremation at a day and time of your choice subject to availability
- Officiant's fees

## What additional costs could there be for me?

- Any services not listed above will need to be paid for at the time they are added or at claim.
- If the covered individual moves and a different funeral director carries out the plan, there may be more to pay.
- There may be more to pay if you later choose a different funeral director.
- Where you have made a contribution towards certain costs, there may be more to pay. These costs are outside of our control. Your funeral director will advise your personal representative of this at the time of the claim.

## Single payment cost of plan

Funeral director's charges	£2,505.00
Third party costs	£1,350.00
Administration fee	£325.00
<b>Total plan price</b>	<b>£4,180.00</b>

For a bespoke plan or to add additional services to the above, for a joint plan or to pay by instalments, please contact us on the number above.

The plan information and prices provided should be used as an example only. There is further important information you will need before deciding to purchase a funeral plan. Terms and conditions apply. Prices correct as at April 2025 and may change in the future. Price based on today's cost of a funeral plus a £325 administration fee charged by Ecclesiastical and any instalment charges.

Ecclesiastical Planning Services Limited (EPSL) Reg. No. 2644860. Registered in England at Benefact House, 2000 Pioneer Avenue, Gloucester Business Park, Brockworth, Gloucester, GL3 4AW, United Kingdom. EPSL is authorised and regulated by the Financial Conduct Authority. Firm Reference Number 958152.

# The Premier Funeral Plan



From: Williamson Brothers Limited  
Visit: Birch House, Birches Head Road, Birches Head, Stoke-on-Trent, ST1 6LH  
Call: 01782 212880 Email: office@williamsonbrothers.co.uk

## Funeral director's costs

- The services of your funeral director including professional guidance on the legal documents for certification and registration of death and making the funeral arrangements
- Collection of the deceased in the local area up to 15 road miles during office hours
- Care of the deceased
- Viewing the deceased by appointment during office hours
- A standard-sized superior veneer coffin with panelled sides and a flat lid
- Transport of the deceased on the day of the funeral in the local area - standard motor hearse
- 2 limousines on the day of the funeral in the local area
- 4 pallbearers to convey the coffin on the day of the funeral
- The collection and administration of charitable donations

## Contribution towards third party costs which are outside the control of the funeral director

- A local, attended cremation at a day and time of your choice subject to availability
- Officiant's fees

## What additional costs could there be for me?

- Any services not listed above will need to be paid for at the time they are added or at claim.
- If the covered individual moves and a different funeral director carries out the plan, there may be more to pay.
- There may be more to pay if you later choose a different funeral director.
- Where you have made a contribution towards certain costs, there may be more to pay. These costs are outside of our control. Your funeral director will advise your personal representative of this at the time of the claim.

## Single payment cost of plan

Funeral director's charges	£2,840.00
Third party costs	£1,350.00
Administration fee	£325.00
<b>Total plan price</b>	<b>£4,515.00</b>

For a bespoke plan or to add additional services to the above, for a joint plan or to pay by instalments, please contact us on the number above.

The plan information and prices provided should be used as an example only. There is further important information you will need before deciding to purchase a funeral plan. Terms and conditions apply. Prices correct as at April 2025 and may change in the future. Price based on today's cost of a funeral plus a £325 administration fee charged by Ecclesiastical and any instalment charges.

Ecclesiastical Planning Services Limited (EPSL) Reg. No. 2644860. Registered in England at Benefact House, 2000 Pioneer Avenue, Gloucester Business Park, Brockworth, Gloucester, GL3 4AW, United Kingdom. EPSL is authorised and regulated by the Financial Conduct Authority. Firm Reference Number 958152.

# The Unattended Funeral Plan



From: Williamson Brothers Limited  
Visit: Birch House, Birches Head Road, Stoke-on-Trent, ST1 6LH  
Call: 01782 212880 Email: office@williamsonbrothers.co.uk

## Funeral director's costs

- The services of your funeral director including professional guidance on the legal documents for certification and registration of death and making the funeral arrangements
- Collection of the deceased in the local area up to 15 road miles at any time
- Care of the deceased
- Viewing the deceased by appointment during office hours
- A standard-sized simple wood effect coffin with flat sides and a flat lid
- Transport of the deceased on the day of the funeral in the local area - standard motor hearse
- 4 pallbearers to convey the coffin on the day of the funeral

## Contribution towards third party costs which are outside the control of the funeral director

- An unattended cremation at a day, time and location of our choice with no mourners or service

## What additional costs could there be for me?

- Any services not listed above will need to be paid for at the time they are added or at claim.
- If the covered individual moves and a different funeral director carries out the plan, there may be more to pay.
- There may be more to pay if you later choose a different funeral director.
- Where you have made a contribution towards certain costs, there may be more to pay. These costs are outside of our control. Your funeral director will advise your personal representative of this at the time of the claim.

## Single payment cost of plan

Funeral director's charges	£1,345.00
Third party costs	£375.00
Administration fee	£325.00
<b>Total plan price</b>	<b>£2,045.00</b>

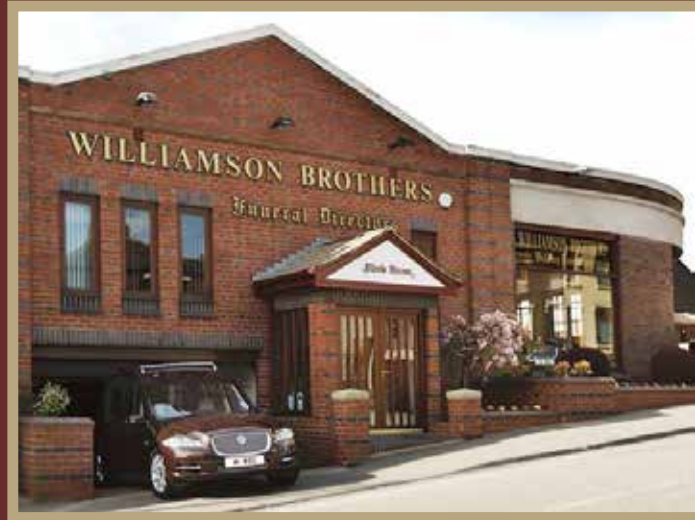
For a bespoke plan or to add additional services to the above, for a joint plan or to pay by instalments, please contact us on the number above.

The plan information and prices provided should be used as an example only. There is further important information you will need before deciding to purchase a funeral plan. Terms and conditions apply. Prices correct as at April 2025 and may change in the future. Price based on today's cost of a funeral plus a £325 administration fee charged by Ecclesiastical and any instalment charges.

Ecclesiastical Planning Services Limited (EPSL) Reg. No. 2644860. Registered in England at Benefact House, 2000 Pioneer Avenue, Gloucester Business Park, Brockworth, Gloucester, GL3 4AW, United Kingdom. EPSL is authorised and regulated by the Financial Conduct Authority. Firm Reference Number 958152.

# Get in touch

For help with any aspect of funeral planning or to find out more about pre-arranged funeral plans get in touch today.



## Williamson Brothers

Birch House  
Birches Head Road  
Birches Head  
Stoke-on-Trent  
ST1 6LH

**01782 212880**

[office@williamsonbrothers.co.uk](mailto:office@williamsonbrothers.co.uk)

[www.williamsonbrothers.co.uk](http://www.williamsonbrothers.co.uk)



 /WilliamsonBrothersFD

 **ecclesiastical**  
Planning Services

Ecclesiastical Planning Services, Benefact House, 2000 Pioneer Avenue, Gloucester Business Park, Brockworth, Gloucester, GL3 4AW.  
Tel: 0800 633 5626 Email: [info@epsfunerals.com](mailto:info@epsfunerals.com)

Williamson Brothers Limited, Birch House, Birches Head Road, Birches Head, Stoke-on-Trent, ST1 6LH Reg. No. 02529344 is an Appointed Representative of Ecclesiastical Planning Services Limited Reg. No. 2644860, registered in England at Benefact House, 2000 Pioneer Avenue, Gloucester Business Park, Brockworth, Gloucester, GL3 4AW, UK, which is authorised and regulated by the Financial Conduct Authority. Firm Reference Number 958152.